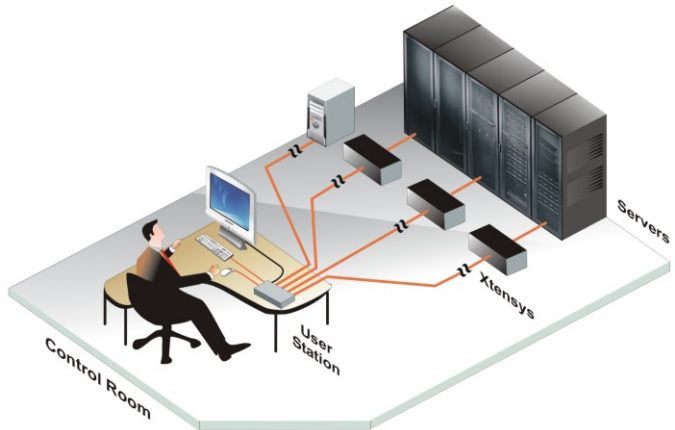


ROSE.COM

Installation and Operations Manual



XTR-11 / XTR-12 / XTR-14



LIMITED WARRANTY

Rose Electronics warrants Xtensys™ User Stations to be in good working order for one year from the date of purchase from Rose Electronics or an authorized dealer. Should this product fail to be in good working order at any time during this one-year warranty period, Rose Electronics will, at its option, repair or replace the Unit as set forth below. Repair parts and replacement units will be either reconditioned or new. All replaced parts become the property of Rose Electronics. This limited warranty does not include service to repair damage to the Unit resulting from accident, disaster, abuse, or unauthorized modification of the Unit, including static discharge and power surges.

Limited Warranty service may be obtained by delivering this unit during the one-year warranty period to Rose Electronics or an authorized repair center providing a proof of purchase date. If this Unit is delivered by mail, you agree to insure the Unit or assume the risk of loss or damage in transit, to prepay shipping charges to the warranty service location, and to use the original shipping container or its equivalent. You must call for a return authorization number first. Under no circumstances will a unit be accepted without a return authorization number. Contact an authorized repair center or Rose Electronics for further information.

ALL EXPRESS AND IMPLIED WARRANTIES FOR THIS PRODUCT INCLUDING THE WARRANTIES OF MERCHANTABILITY AND FITNESS FOR A PARTICULAR PURPOSE, ARE LIMITED IN DURATION TO A PERIOD OF ONE YEAR FROM THE DATE OF PURCHASE, AND NO WARRANTIES, WHETHER EXPRESS OR IMPLIED, WILL APPLY AFTER THIS PERIOD. SOME STATES DO NOT ALLOW LIMITATIONS ON HOW LONG AN IMPLIED WARRANTY LASTS, SO THE ABOVE LIMITATION MAY NOT APPLY TO YOU.

IF THIS PRODUCT IS NOT IN GOOD WORKING ORDER AS WARRANTED ABOVE, YOUR SOLE REMEDY SHALL BE REPLACEMENT OR REPAIR AS PROVIDED ABOVE. IN NO EVENT WILL ROSE ELECTRONICS BE LIABLE TO YOU FOR ANY DAMAGES INCLUDING ANY LOST PROFITS, LOST SAVINGS OR OTHER INCIDENTAL OR CONSEQUENTIAL DAMAGES ARISING OUT OF THE USE OF OR THE INABILITY TO USE SUCH PRODUCT, EVEN IF ROSE ELECTRONICS OR AN AUTHORIZED DEALER HAS BEEN ADVISED OF THE POSSIBILITY OF SUCH DAMAGES, OR FOR ANY CLAIM BY ANY OTHER PARTY.

SOME STATES DO NOT ALLOW THE EXCLUSION OR LIMITATION OF INCIDENTAL OR CONSEQUENTIAL DAMAGES FOR CONSUMER PRODUCTS, SO THE ABOVE MAY NOT APPLY TO YOU. THIS WARRANTY GIVES YOU SPECIFIC LEGAL RIGHTS AND YOU MAY ALSO HAVE OTHER RIGHTS WHICH MAY VARY FROM STATE TO STATE.

IBM®, AT, and PS/2 are trademarks of International Business Machines Corp.
Microsoft® and Microsoft Windows™ are registered trademarks of Microsoft Corp.
Apple, Macintosh, and ADB are trademarks of Apple Computer, Inc.
Sun is a registered trademark of Sun Microsystems Inc.

Any other trademarks mentioned in this manual are acknowledged to be the property of the trademark owner

Copyright © Rose Electronics 2011. All rights reserved.

No part of this manual may be reproduced, stored in a retrieval system, or transcribed in any form or any means, electronic or mechanical, including photocopying and recording, without the prior written permission of Rose Electronics.

Rose Electronics Part # MAN-XTR-US
Printed In the United States of America ■ Revision 1.2

TABLE of CONTENTS

Contents	Page #
Disclaimer.....	1
About this manual.....	1
Introduction.....	1
Features.....	2
System Overview.....	3
Xtensys user station models	2
User Station Installation	3
Switching to a computer – XTR-11 model	5
Keyboard switching commands – XTR-11	6
Switching to a computer – XTR-14 model	6
Safety	8
Safety and EMC Regulatory Statements	9
Service Information	10
Maintenance and Repair.....	10
Technical Support.....	10

Figures	Page #
Figure 1- Typical Installation	3
Figure 2. XTR-11 Computer select window	5

INTRODUCTION

Disclaimer

While every precaution has been taken in the preparation of this manual, the manufacturer assumes no responsibility for errors or omissions. Neither does the manufacturer assume any liability for damages resulting from the use of the information contained herein. The manufacturer reserves the right to change the specifications, functions, or circuitry of the product at any time without notice.

The manufacturer cannot accept liability for damages due to misuse of the product or other circumstances outside the manufacturer's control. The manufacturer will not be responsible for any loss, damage, or injury arising directly or indirectly from the use of this product.

(See limited warranty)

About this manual

This manual covers the installation, configuration, and the operation of the Xtensys User stations. The Models section describes each of the 6 models available, their connectors and cabling. The Installation section describes how the Xtensys User Station interconnects to the Xtensys switch to form a seamless switching network. The Operations section defines how to operate the system and all the user features available to make switching and maintenance simple and easy.

Introduction

The Xtensys user stations are designed to work with all Xtensys product models. The Xtensys user station connects via CATx cable to one or four Xtensys switches or PC's depending on the model. The XTR-11 model connects to a single Xtensys switch, the XTR-12 model connects to two Xtensys switches and the XTR-14 model connects to four Xtensys switches. There is also a video only model available. The XTR-11, XTR-12, and the XTR-14 models are available with PS/2 or PS/2 and USB Keyboard and mouse connectors.

The advanced on-screen display (OSD) menus are intuitive and easy to use. The configuration of the Xtensys switch can be performed from the XTR-11 user station only.

Reliability, security, flash memory technology, versatility, and other advanced technological features ensure the Xtensys CAT5 KVM Switch System will streamline your data center or server room, simplify the maintenance, access and updating of your systems, and easily expand as your system demands increase.

Features

Security

- Unique configuration password for persons authorized to perform configuration maintenance.
- User names and passwords allow controlled access to computers with sensitive information, system data, or restricted applications
- Computers can be assigned to a unique group, allowing authorized access only

Flexibility

- Extend the distance from the PC to the User stations up to 1,000 feet using industry standard CATx cabling
- All connections are made easy by using CATx cabling
- Switching to computers can be done by keyboard commands or a convenient on-screen list of computers
- Multi-language capabilities

On-screen display technology

- The Xtensys user station video pops-up over the computer application display or is automatically generated
- Easy to use menus guide you through the configuration process
- The connection status for all computers can be displayed

Installation

- The basic installation of the Xtensys user station consists of:
 - Connecting the user stations to the Xtensys KVM ports via CATx cable
 - Connect a local KVM station directly to the Xtensys user station

Package contents

- Power cable
- Serial cable

Registration

Register your product for future updates by registering at <http://www.rose.com/htm/online-registrationform.htm>

System Overview

The Xtensys user station is designed with the latest in KVM switching technology. From the Xtensys user station, you have access to all the computers, servers, and serial devices that are connected to the Xtensys switch.

The Xtensys user station's design makes the unit easy to install, and maintain. The complete system consists of the Xtensys switch, one or more user stations, CATx transmitters as required for each connected computer, and the computers, servers, and serial devices that will be connected.

KVM user station

A KVM user station, consisting of a **K**eyboard, **V**ideo monitor, and **M**ouse, connects directly to the corresponding connectors on the rear panel of the Xtensys user station. A KVM station can also be connected directly to the Xtensys switch for local access to all connected equipment.

KVM Station Keyboard and Mouse

The keyboard and mouse that is connected to the user stations or local console are PS/2 or USB (depending on the model).

KVM Station Video Monitor

The KVM user station's video monitor should be capable of supporting the resolution, frequency, and sync type being sent by computers connected to the Xtensys switch. It is recommended that the KVM monitor be a multi-sync monitor capable of resolutions up to 1280 x 1024 @ 75Hz or better.





Cabling

KVM user is easily connected to the Xtensys switch with industry standard CATx cables. Cables are usually purchased along with the Xtensys to provide quick, trouble-free installation. Provide adequate strain relief for the CATx cables to relieve excess tension on the connectors.

Avoid routing cables close to fluorescent lights, air compressors, high voltage power sources and machinery that may create electrical noise or interference with the operation of the Xtensys switch.

MODELS

Xtensys user station models

	<p>Indicators Power Status</p>
<p>Front View</p>	
	<p>Connectors 1-RJ45 2-PS/2 2-USB (Optional) 1-RS232 1-Power</p>
<p>Rear View XTR-11-U</p>	
	<p>Connectors 2-RJ45 2-PS/2 2-USB (Optional) 1-RS232 1-Power</p>
<p>Rear View XTR-12-U</p>	
	<p>Connectors 4-RJ45 2-PS/2 2-USB (Optional) 1-RS232 1-Power</p>
<p>Rear View XTR-14-U</p>	

User Station Installation

The flexibility of the Xtensys system enables it to configure to almost any system environment.

The User Station is available with one local KVM Station connectors and 1, 2, or 4 RJ45 link ports.

The Switch is available with one local KVM station connectors, 0, 2, 4, 8, or 16 remote KVM connections, and 8, 16, 32, 48, or 64 RJ45 CPU ports.

All connections from the User Station to the Switch and from the Switch to the computers, servers, and serial devices use CATx cabling.

The total CATx cable length from the User Station to the Switch and from the Switch to the connected computers is 1,000 feet max.

Figure 1 shows a typical installation of the XTR-11 user station. The XTR-14 user station can connect via CATx cable to four Xtensys switches.

Using simple keyboard commands or the on-screen list, you can easily switch the user station to any of the computers connected to the Xtensys switches.

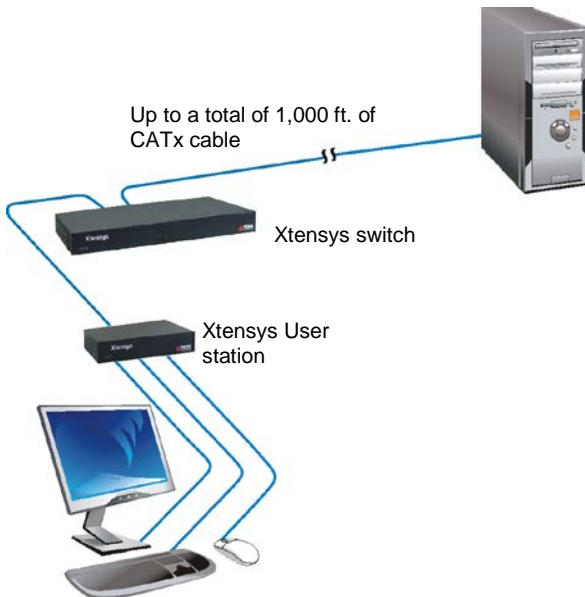


Figure 1- Typical Installation

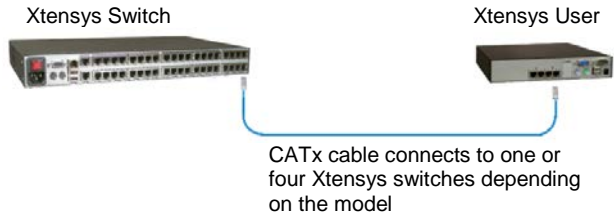
Connecting the KVM station

The KVM station connects directly to the Xtensys User Station. The KVM stations keyboard, monitor, and mouse cables connect directly to the corresponding connectors on the User station.



Connecting the User Station to Xtensys Switch

The user stations connect directly to the Xtensys Switch using industry standard CATx cable. Depending on the User Station and Switch model used, up to 4 different Xtensys Switches can be connected to a single User Station.



All models install basically in the same manor. Connect a CATx cable from the User station to the KVM input port on an Xtensys switch.

The XTR-11 connects to 1 Xtensys switch
The XTR-12 connects to 2 Xtensys switches
The XTR-14 connects to 4 Xtensys switches

Refer to the Xtensys switch users manual for the complete system installation procedure.

Switching to a computer – XTR-11 model

There are two methods of switching a user station to a computer connected to an Xtensys switch. You can use the OSD list of connected computers or simple keyboard commands. To display the OSD list of computers using the KVM station connected to the XTR-11 model, press and release the left Ctrl key then the Esc key. The window shown in figure 2 will display.

Note: The computer select window is different for the XTR-14 model.

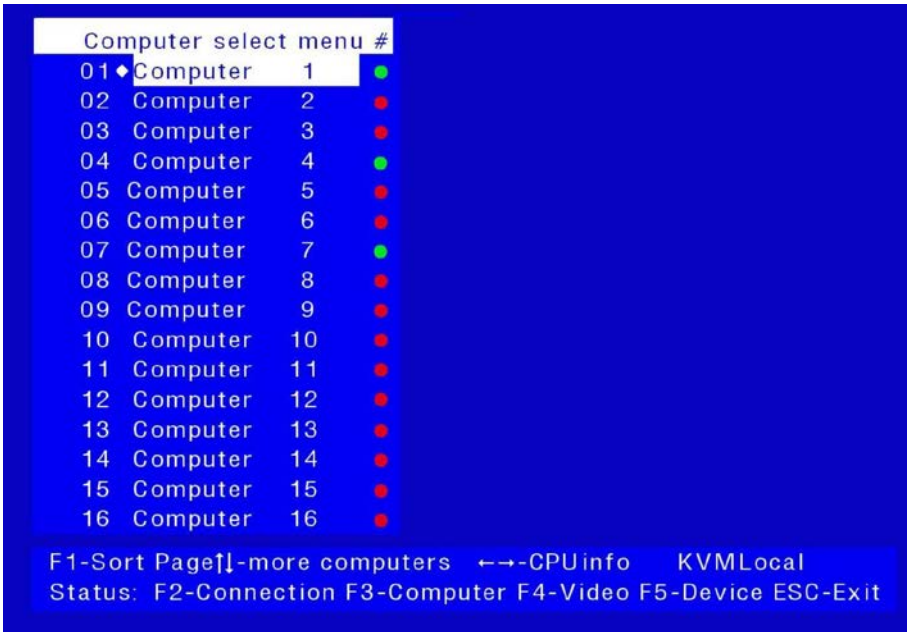


Figure 2. XTR-11 Computer select window

The computer select window is a dynamic window that will automatically adjust to the number of computer ports that are on the Xtensys switch that the user station is connected to. The left column lists the computer port number on the Xtensys switch. The middle column is the connected computer's name and the right column displays a green indicator if that computer is connected and powered on or a red indicator if there is no computer or the computer is not powered on. Use the page up and down keys to scroll to more computers. Select the computer to switch to and press enter and that computer will be connected to the user station and have full keyboard and mouse control if authorized.

Keyboard switching commands – XTR-11

Switching to a computer that is connected to an Xtensys switch using simple keyboard commands is performed by pressing and releasing the left Ctrl key and, within 2 seconds, enter the computer port to switch to and then press Enter.

Example: To switch to computer port #19 on the connected Xtensys switch, press and release the left Ctrl key, type in 19, and press enter.

Switching to a computer – XTR-12 / XTR-14 model

To display the OSD list of computers using the KVM station connected to the XTR-14 model, press and release the left Ctrl key then the Esc key. The window shown in figure 3 will display.

Note: The computer select window is different for the XTR-11 model.

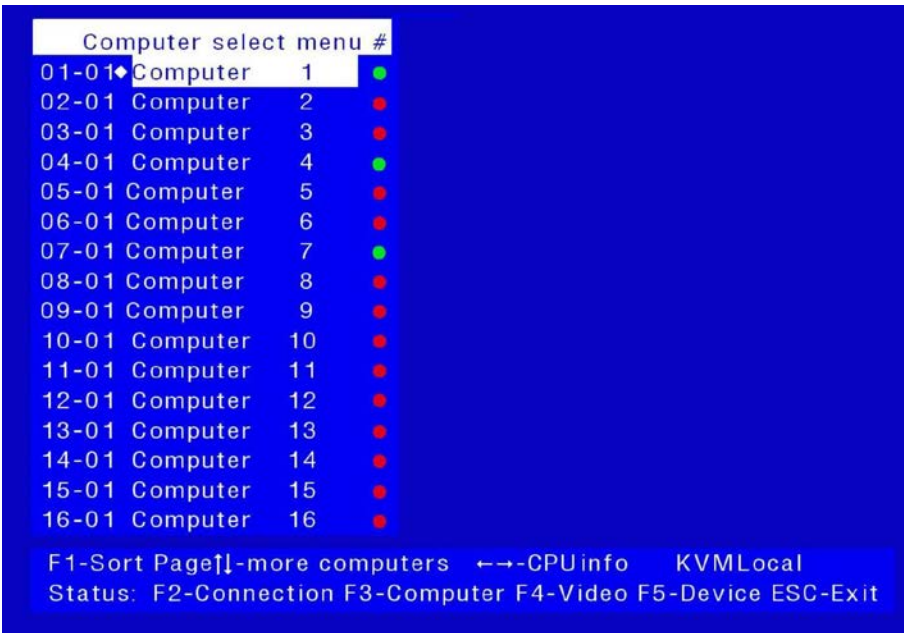


Figure 3. XTR-14 Computer select window

The left column has two rows of numbers (01-01). The left number is the computer port number on the Xtensys switch. The right number is the RJ45 port on the user station (the right port is #1, left port is #2 or #4)

Scrolling down will display the additional computers.

Example: To connect to computer port #12 on Xtensys #2, display the computer select window (Left Ctrl + Esc). Scroll down until the display shows 12-02. Highlight this line, press enter and the user station will connect to Xtensys #2, computer port #12.

NOTE:

Configuration of the Xtensys switch can be performed from the XTR-11 user station only.

Safety

This Xtensys user station has been tested for conformance to safety regulations and requirements, and has been certified for international use. Like all electronic equipment, the Xtensys switch should be used with care. To protect yourself from possible injury and to minimize the risk of damage to this Unit, read and follow these safety instructions.

- Follow all instructions and warnings marked on this Unit.
- Except where explained in this manual, do not attempt to service this Unit yourself.
- Do not use this Unit near water.
- Assure that the placement of this Unit is on a stable surface or rack mounted.
- Provide proper ventilation and air circulation.
- Keep power cord and connection cables clear of obstructions that might cause damage to them.
- Use only power cords, power transformer and connection cables designed for this Unit.
- Use only a grounded (three-wire) electrical outlet.
- Keep objects that might damage this Unit and liquids that may spill, clear from this Unit. Liquids and foreign objects might come in contact with voltage points that could create a risk of fire or electrical shock.
- Operate this Unit only when the cover is in place.
- Do not use liquid or aerosol cleaners to clean this Unit. Always unplug this Unit from its electrical outlet before cleaning.
- Unplug this Unit from the electrical outlet and refer servicing to a qualified service center if any of the following conditions occur:
 - The power cord or connection cables are damaged or frayed.
 - The Unit has been exposed to any liquids.
 - The Unit does not operate normally when all operating instructions have been followed.
 - The Unit has been dropped or the case has been damaged.
 - The Unit exhibits a distinct change in performance, indicating a need for service.

Safety and EMC Regulatory Statements

Safety Information



Documentation reference symbol. If the product is marked with this symbol, refer to the product documentation to get more information about the product.

WARNING

A **WARNING** in the manual denotes a hazard that can cause injury or death.

CAUTION

A **CAUTION** in the manual denotes a hazard that can damage equipment.

Do not proceed beyond a **WARNING** or **CAUTION** notice until you have understood the hazardous conditions and have taken appropriate steps.

Grounding

These are Safety Class I products and have protective earthing terminals. There must be an un-interruptible safety earth ground from the main power source to the product's input wiring terminals, power cord, or supplied power cord set. Whenever it is likely that the protection has been impaired, disconnect the power cord until the ground has been restored.

Servicing

There are no user-serviceable parts inside these products. Only service-trained personnel must perform any servicing, maintenance, or repair. The user may adjust only items mentioned in this manual.

Service Information

Maintenance and Repair

This Unit does not contain any internal user-serviceable parts. In the event a Unit needs repair or maintenance, you must first obtain a Return Authorization (RA) number from Rose Electronics or an authorized repair center. This Return Authorization number must appear on the outside of the shipping container. See Limited Warranty for more information.

When returning a Unit, it should be double-packed in the original container or equivalent, insured and shipped to:

Rose Electronics
Attn: RA _____
10707 Stancliff Road
Houston, Texas 77099 USA

Technical Support

If you are experiencing problems, or need assistance in setting up, configuring or operating your product, consult the appropriate sections of this manual. If, however, you require additional information or assistance, please contact the Rose Electronics Technical Support Department at:

Phone: (281) 933-7673
E-Mail: TechSupport@rose.com
Web: www.rose.com

Technical Support hours are from: 8:00 am to 6:00 pm CST (USA), Monday through Friday.

Please report any malfunctions in the operation of this Unit or any discrepancies in this manual to the Rose Electronics Technical Support Department.

Appendix A- General Specifications

Dimensions	(All models)	8.75 W x 5.62 D x 1.72 H (in) 22.3 W x 14.4 D x 4.37 H (cm)
Weight	(User station)	2.0 – 3.0 lbs / 0.9 – 1.4 kg
Power		100 – 240 VAC In / 5.0VDC, 5.0A Out adapter
Resolution		1920 x 1440 @ 75Hz
Environmental relative humidity		32 – 122° F / 0 – 50° C, 0% – 80% non-condensing
Connectors		
Power:		Standard receptacle
CPU:		RJ45
User Station:		RJ45
Local KVM:		(2) MD6, HD15, USB
Chassis		Metal
Indicators		Power / Status
Switches		IEC 320 Power

Appendix B- part Numbers and Cables

XTR-11	CATx, VGA, PS2, 1 RJ45 connection
XTR-11-U	CATx, VGA, USB/PS2, 1 RJ45 connection
XTR-12	CATx, VGA, PS2, 2 RJ45 connection
XTR-12-U	CATx, VGA, USB/PS2, 2 RJ45 connection
XTR-14	CATx, VGA, PS2, 4 RJ45 connections
XTR-14-U	CATx, VGA, USB/PS2, 4 RJ45 connections
XTR-MP	CATx, VGA, Video only, 1 RJ45 connection,
XTR-MU	CATx, VGA, Video only, 1 RJ45 connection
TFR-05D500FSUB-2.1	Universal Power Adapter (110-240 VAC to 5VDC, 5A)
CAB-08C5UTP	CAT5 UTP cable (RJ45)



Server Management



Solutions

**10707 Stancliff Road
Houston, Texas 77099**

**Phone: (281) 933-7673
WWW.ROSE.COM**